

HEE Mental Health Programme for Psychological Professions

Helen Smith – Portfolio Manager for Mental Health, Learning Disabilities and Autism

This is HEE

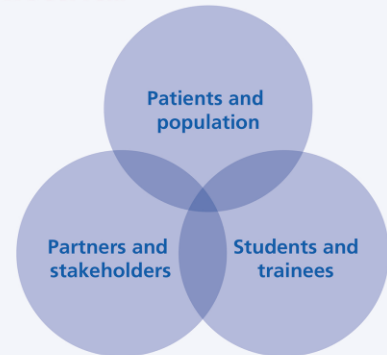
Health Education England exists for one reason only: our **vision** is to help improve the quality of life and health and care services for the people of England by ensuring the workforce of today and tomorrow has the right skills, values and behaviours, in the right numbers, at the right time and in the right place.

Our **purpose** as part of the NHS, is to work with partners to plan, recruit, educate and train the health workforce.

We are people centred, committed to the NHS Constitution, and driven by our **values** of responsibility, inclusiveness, fairness, and confidence.

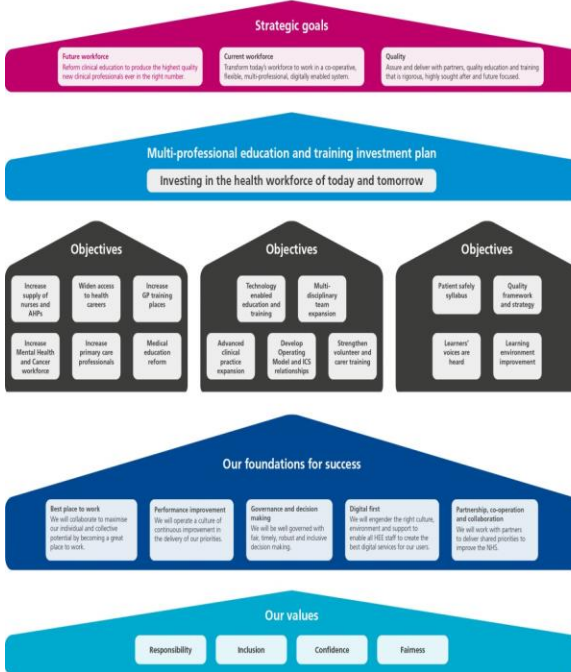
Our **goals** are to deliver and reform education to produce the best possible **future workforce**; to transform the **current workforce** to meet tomorrow's health and care needs; and ensure the **quality** of our education and training system.

We serve...



HEE Plan on a Page – Our Strategic Performance Framework

HEE is part of the NHS, and we work with partners to plan, recruit, educate and train the health workforce.



Value for money
HEE will spend money wisely to achieve our intended outcomes.

Plan on a page:

The plan on a page is what it says, it shows all of HEE's priorities and composite parts of our plan in one place.

- It starts with our values, co-created by colleagues, from which our overall approach to our work derives.
- It shows our internal programmes upon which we build to make us better at what we do.
- It identifies our annual objectives which drive our planning, resources and activity.
- It clearly positions our core business, our investment in clinical education and training in every NHS Trust and thousands of GP surgeries across England.
- It anchors our work around our three core goals, our multi-year priorities.
- It points activity to our purpose as an organisation.
- And, reminds us we are spending taxpayer's money so we should be transparent and accountable in striving for value for that money.

Existing Programmes

Adult IAPT – supporting expansion and upskilling of the workforce

Psychological Therapies for People with Severe Mental Health Problems – range of training programmes to upskill the workforce and transform services

Children and Young People's mental health including Children's Wellbeing Practitioners and Education Mental Health Practitioners

Expanding education capacity for **Clinical Psychology** and **Child and Adolescent Psychotherapy**

Widening access to Psychological Professions

- Pre-Clinical Training (Child and Adolescent Psychotherapy)
- Family and Systemic Psychotherapy Training
- Paid Opportunities for Disadvantaged Aspiring Clinical Psychologists to Gain Clinical Experience
- Mentoring opportunities for Aspiring Clinical Psychologists from ethnic minorities
- Leadership mentoring scheme for Ethnic Minority psychological professionals To help build leadership capacity within the psychological professions across England

Information sent to Chief Psychological Professions Officers and relevant education providers – bids returned by 10th September.

24th September – outcome of bids to be confirmed with funding distributed in early October.

Emerging work

Mental Health Wellbeing Practitioner

- The Mental Health and Wellbeing Practitioner role will provide a new opportunity for adult and older adult community mental health services. As well as improving support for service users, this role should build capacity in teams to enable more experienced staff to focus on delivery of psychological therapies or to train in psychological therapies.
- The role of Mental Health and Wellbeing Practitioner role has been developed to support collaborative care planning, working alongside other members of the multi-disciplinary team. These practitioners will also deliver a defined set of brief, wellbeing-focused, psychologically informed interventions. They will not be delivering psychological therapies.

Mental Health and Wellbeing Practitioner - Children & Young People role (*title tbc*)

- To extend and improve the psychological care in CYP in-patient units and intensive home treatment teams and to improve multi-disciplinary staffing
- Practitioners will work with CYP who have complex and severe mental health conditions in both in-patient and intensive home treatments settings, practicing under close supervision as part of the multi-disciplinary teams
- Work will start with pilot sites – timescales tbc