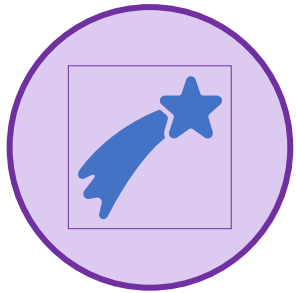


What can the PPN do for you and what can you do for the PPN – the next ten years



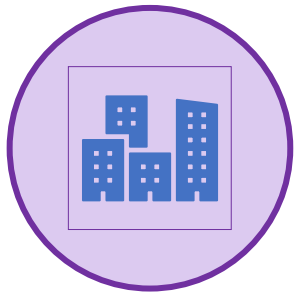
# The North West Approach



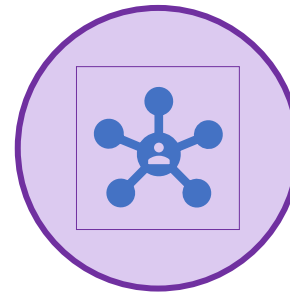
Proud to have started  
this journey



Celebrating Success



Building on what works



A Network isn't a  
network without its  
members

# The PPN Community of Practice Approach



# Network maturity

- ❁ Leadership – shared among a core group, members can influence and there are shared aims
- ❁ Membership – people ask to join, smaller groups within the community, meeting members needs
- ❁ Knowledge and practices – tools in place to share knowledge, shared work completed, opportunities to create learning and share knowledge as well as bringing in external knowledge
- ❁ Skills development - professional development is supported
- ❁ Visibility - network is visible and so is its contribution

# What Have We Learned?

- 🌀 Promoting mental and physical health parity is an enabler – keep focus on patient need, not disciplinary differences
- 🌀 A curious and ‘can do’ attitude is essential
- 🌀 Build and nurture leadership skills, enable and support talent and interest – Create distributed leadership
- 🌀 Collaboration with national, local and regional bodies helps achieve change
- 🌀 The application of psychological approaches in health and care is wider than mental health

# The future of the North West PPN

## Priorities – Next 12 Months

- Workforce council membership
- Supporting our Communities of Practice to continue
- Psychological Professions Week 13<sup>th</sup>-17<sup>th</sup> November 2023
- Leadership developments
- Recruit to new Programme Manager role
- Our fit in new NHS England structures

What will the PPN  
NW do in the next  
10 years?



# Menti.com 8182 7207

- What do you think is important for the NWPPN to focus on in relation to transform/grow/lead/develop/diversify?
- How can you support this work?
- What should be the first steps/actions?
- What is your personal action or pledge?

