

What next for the PPNs?

How can we use the networks to maximise the impact of the psychological professions for the public?

Dr Adrian Whittington
National Clinical Lead for Psychological
Professions
NHS England

May 2023



A lighthouse on the left side of the frame emits a bright beam of light that cuts through a sky filled with dark, dramatic clouds. The light creates a strong contrast and illuminates the clouds it passes through. The overall mood is one of hope and guidance.

A time of opportunity?

Building bridges...





Playing in harmony



Psychological Professions Workforce Plan 2020/21 – 2023/24



The workforce plan

- **Grow:** Expanding the psychological professions workforce to improve access to psychological healthcare
- **Develop:** Establishing clear career paths and development opportunities for all psychological professionals
- **Diversify:** Attracting and retaining people of talent from all backgrounds
- **Lead:** Developing the right local, regional and national leadership
- **Transform:** Embracing new ways of working

Psychological Professions Workforce Plan

2020/21 – 2023/24



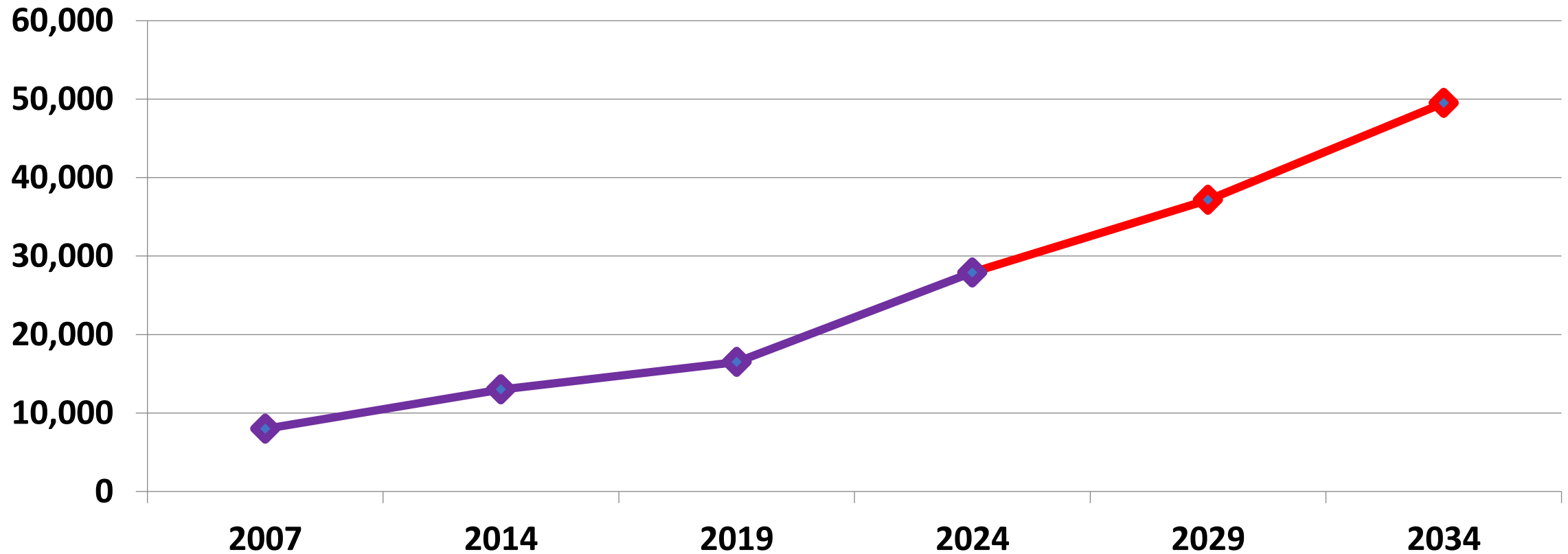
Grow



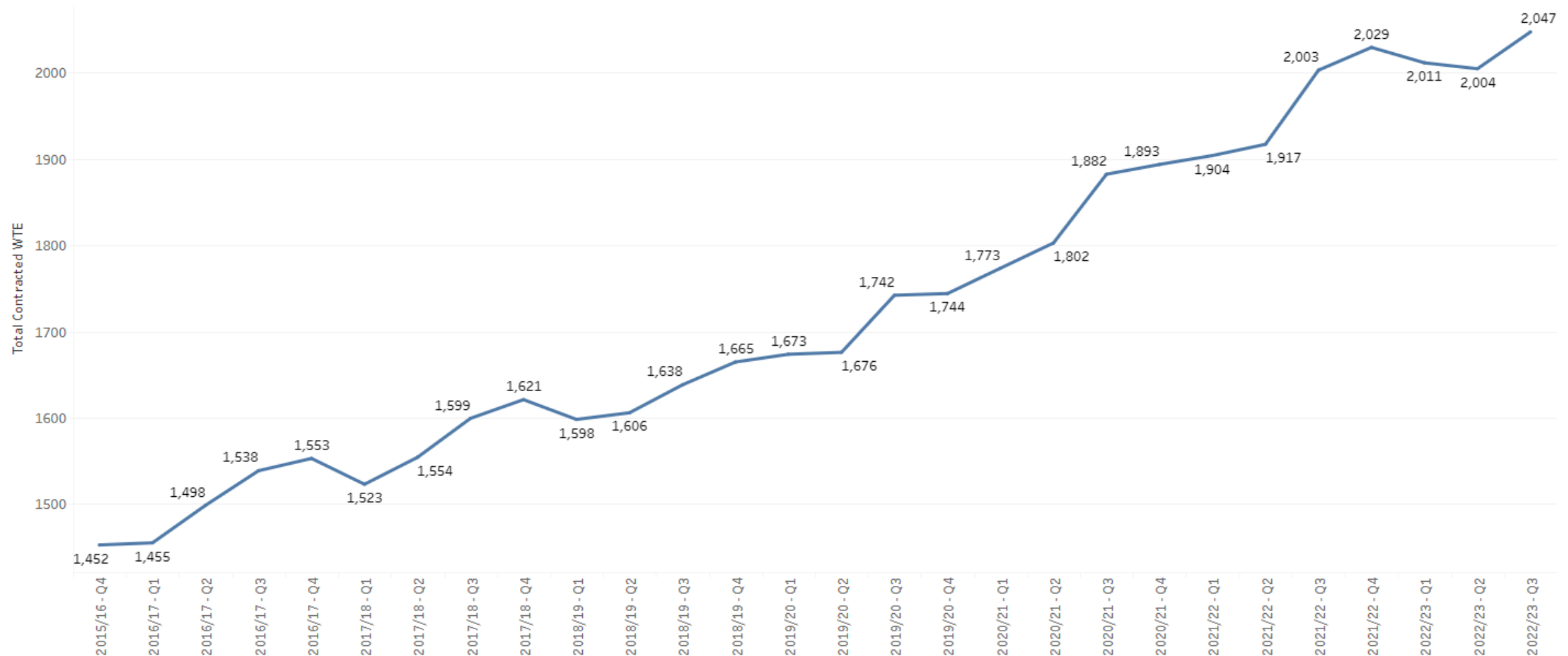
Past ten years

A projection...

Psychological Professionals in NHS Care



NW Applied Psychologists, Art Drama and Music Therapists, Psychological Therapists and Psychotherapists (MH ESR only) 2015-2022



NOTE: Values less than 5 are suppressed and hidden from visualisation.

Develop



Past ten years

Diversify



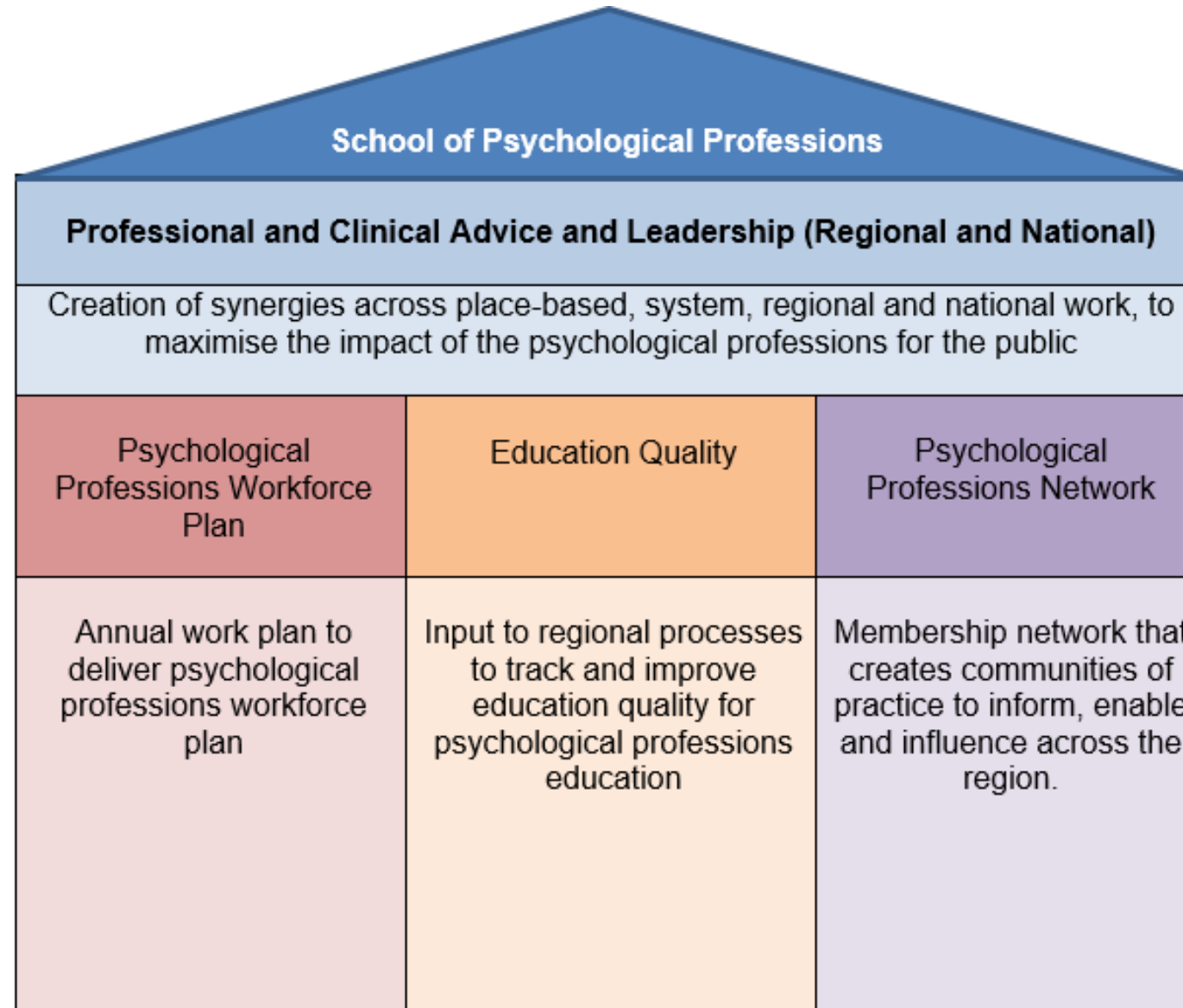
Past ten years

Lead



Past ten years

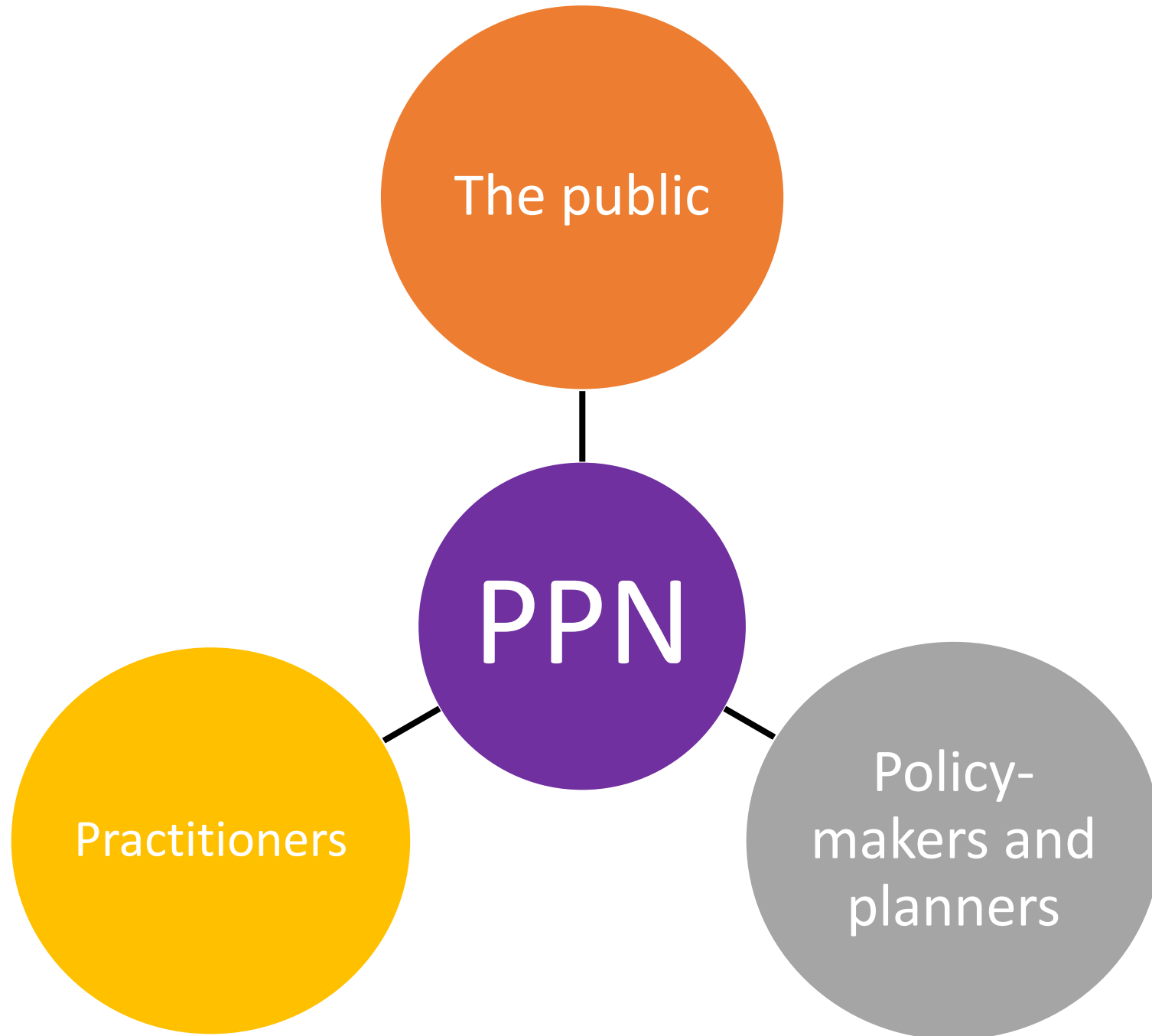
Regional Schools of Psychological Professions

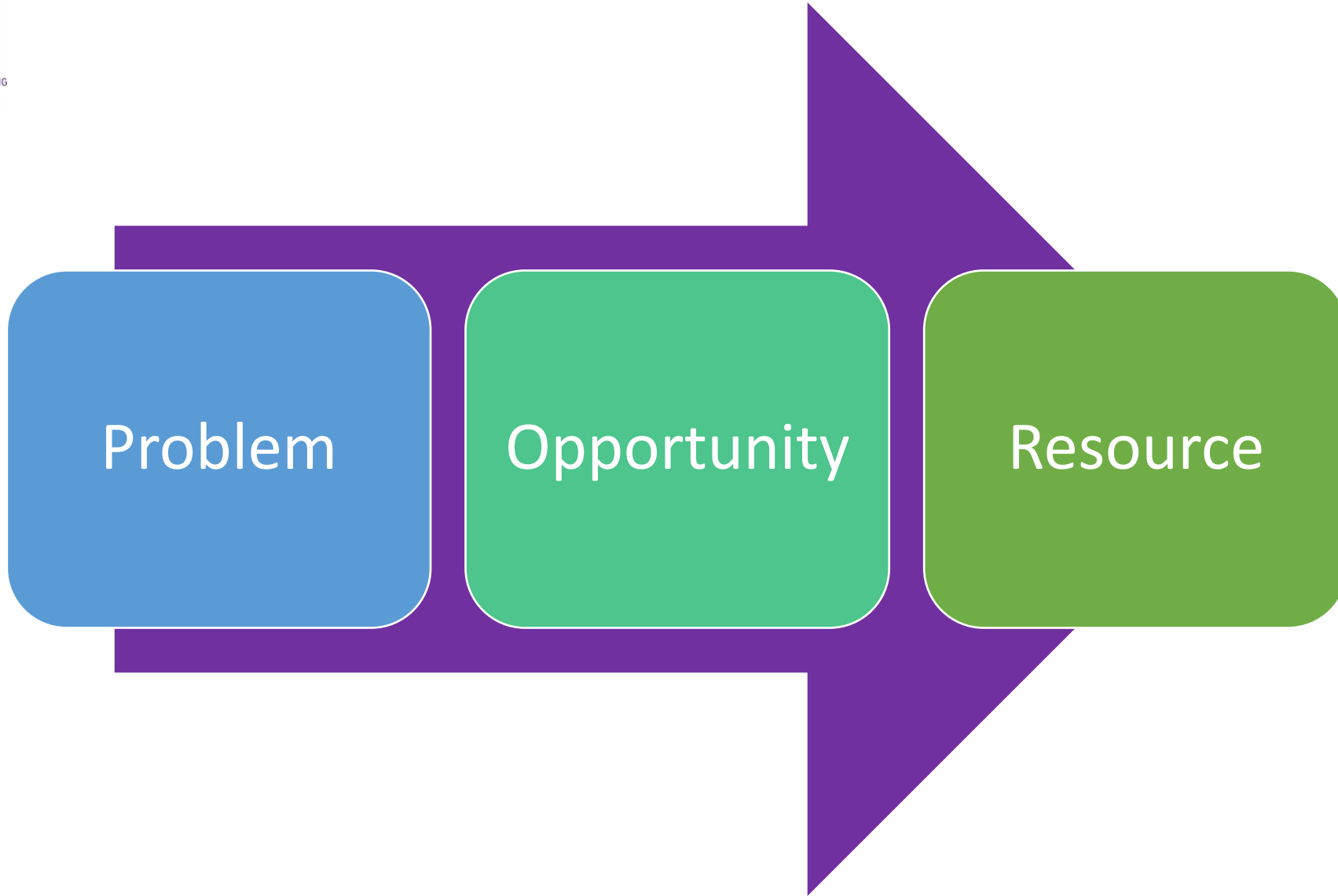


Transform

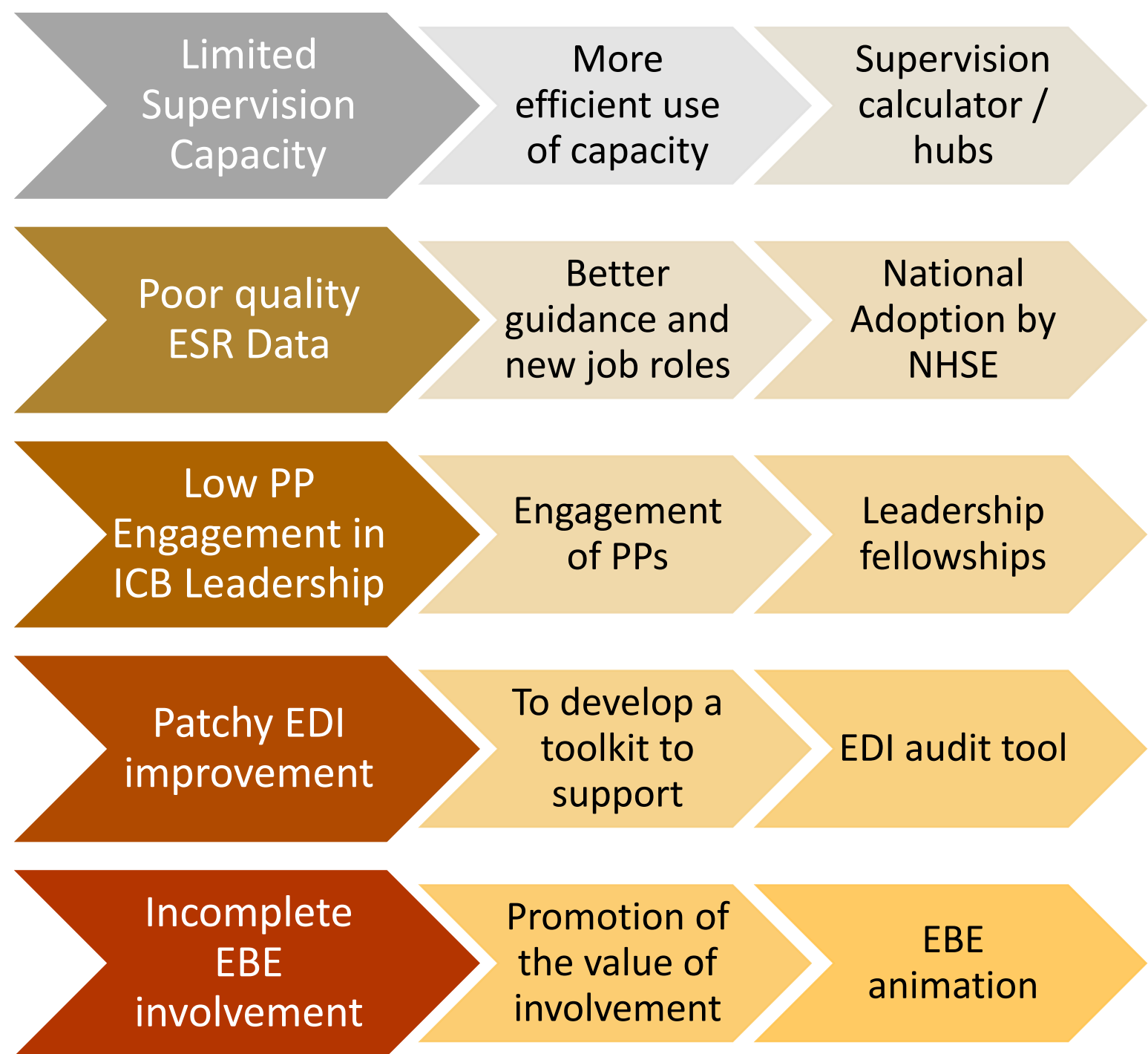


Past ten years





Achievements



What will the PPN
NW do next?

